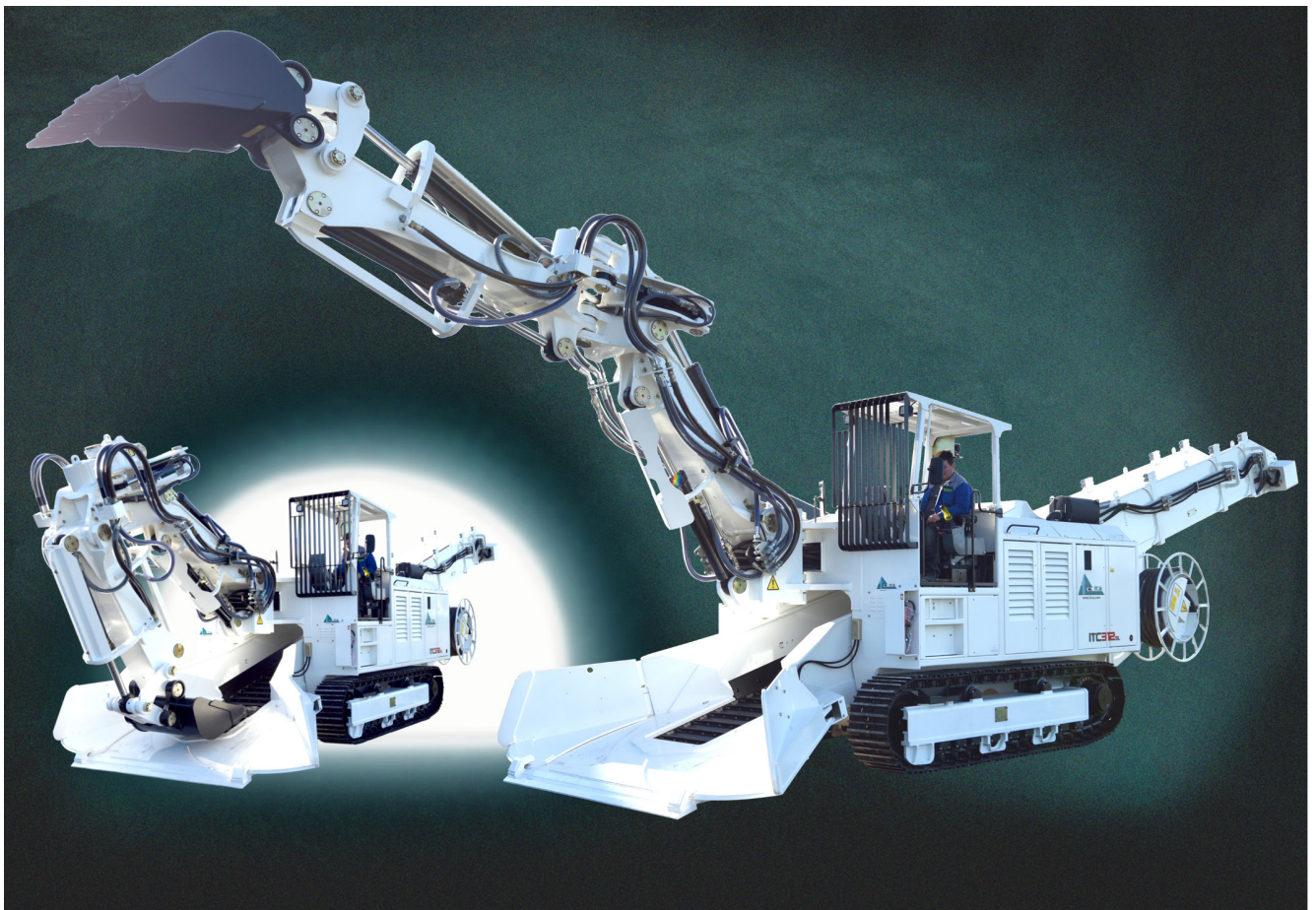


## TUNNEL HEADING AND LOADING MACHINE

# ITC 312N - H1

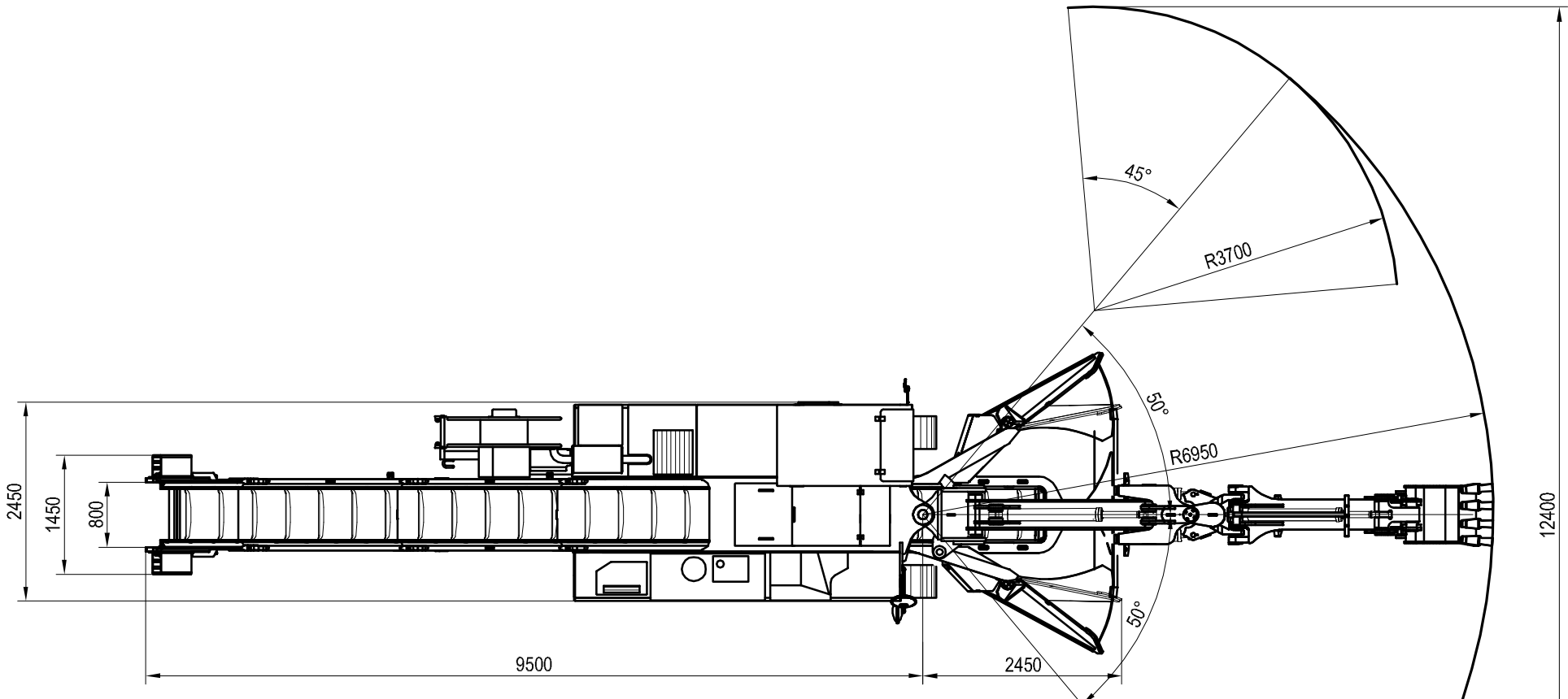
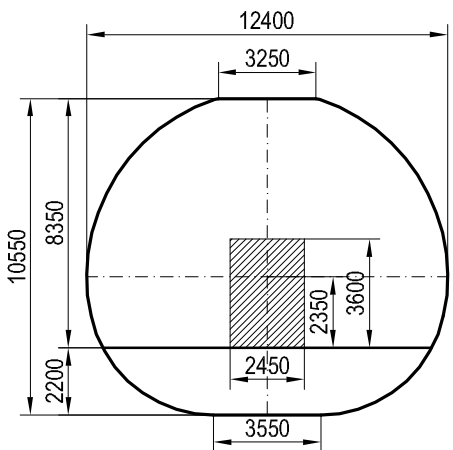
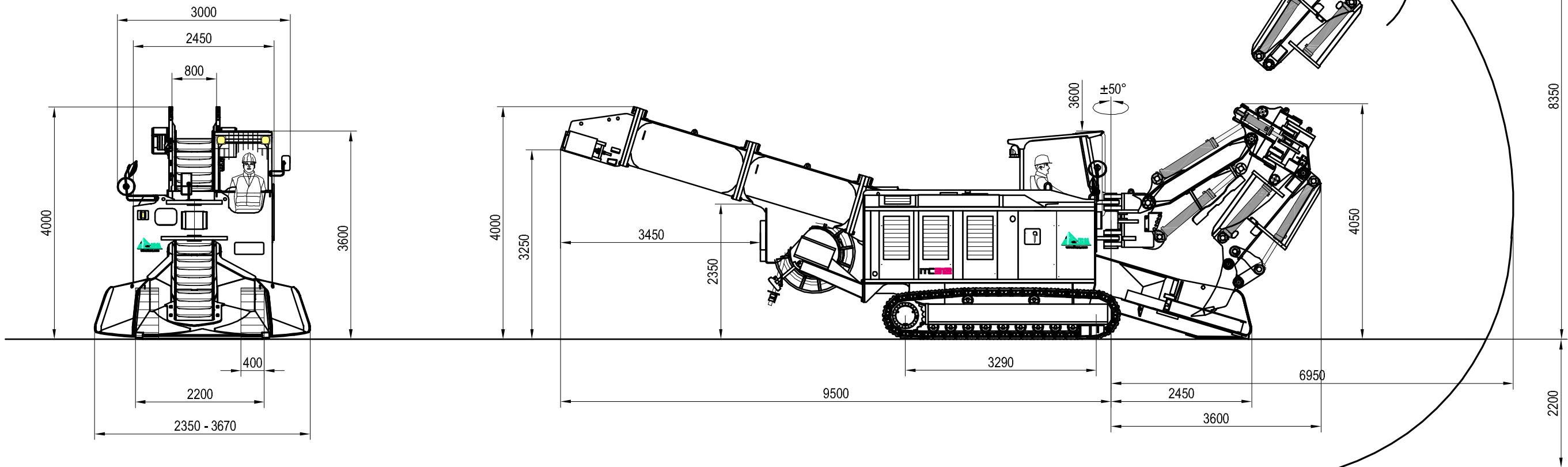


Non contractual picture

- Excavation boom with swivel dipper stick for heading in soft ground
- Minimal cross section approx. 18 m<sup>2</sup>
- Diesel drive 165 kW
- Electric drive 90 kW
- Operating weight approx. 35,2 t

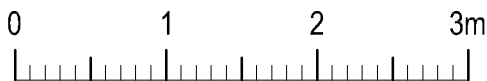


Tunnel Heading and Loading Machine  
Model ITC 312N H1  
Front, side and top view with boom geometry




Force acc. to ISO 6015, with standard bucket

Breakaway torque	139 kN
Tear-out force over console	68 kN
Tear-out force over dipper stick	73 kN
Lifting power (without working tool)	10 kN
Specific ground pressure	13,4 N/cm <sup>2</sup>
Global weight	35,9 t



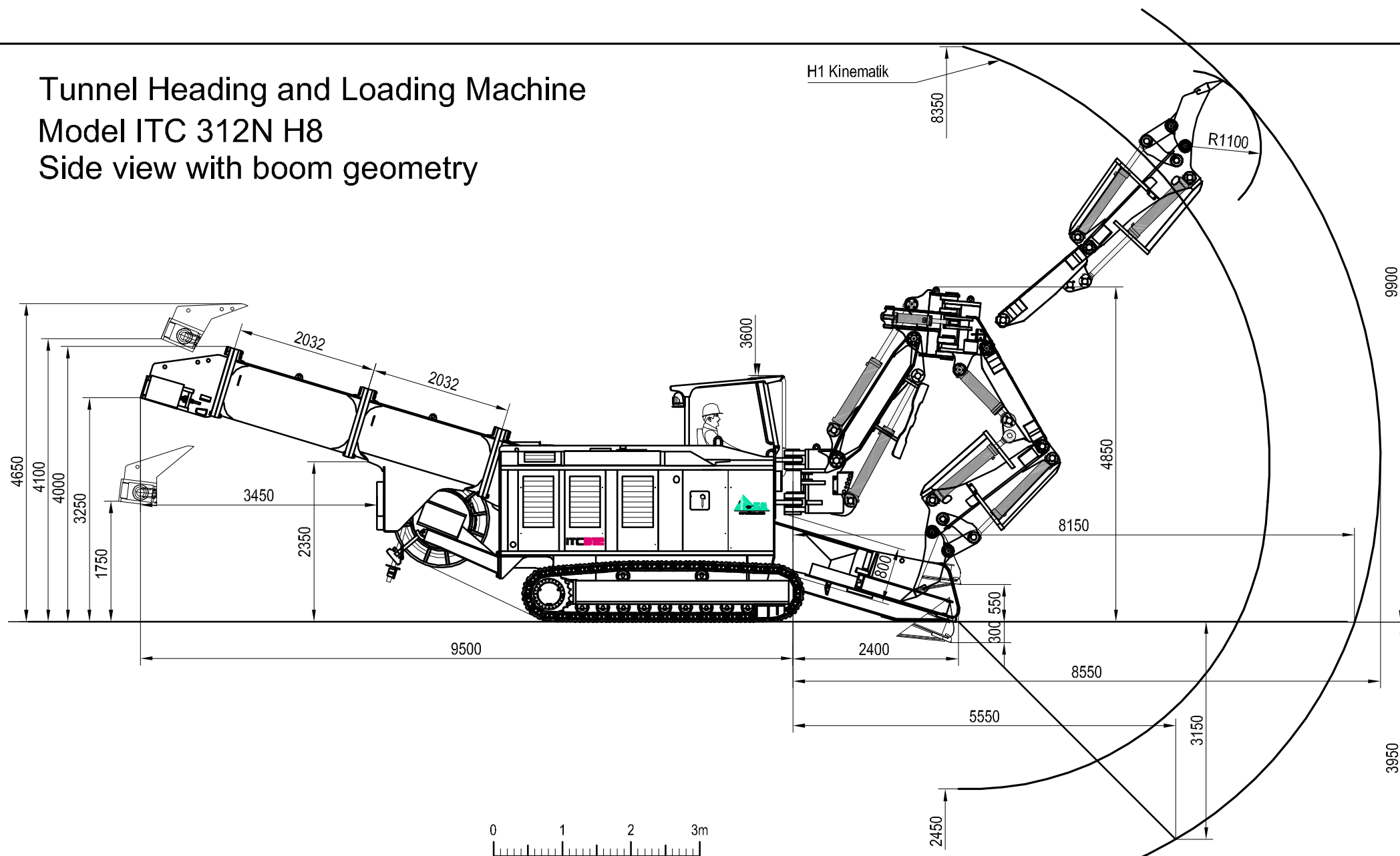
Produced by ITC GmbH & Co.KG

<b>S600</b>	14.02.2007 PB	<b>A3 - 1:75</b>	 <b>ITC SA</b> INTER TECHNO COMMERCE SA	CH-1920 MARTIGNY
	I:\Acad\dessin_S\S600\			Tf: +41 277 222 191
	Dessin non contractuel			Fax: +41 277 222 185
Rev.N°: 11 Date: 25.08.16 PB				info@itcsa.com

# Tunnel Heading and Loading Machine

## Model ITC 312N H8

### Side view with boom geometry



S603-01

13.03.2015 PB

I:\Acad\dessin\_S\S603-01\

Dessin non contractuel

Rev.N°: 1 Date: 25.08.16 PB

1:75



CH-1920 MARTIGNY

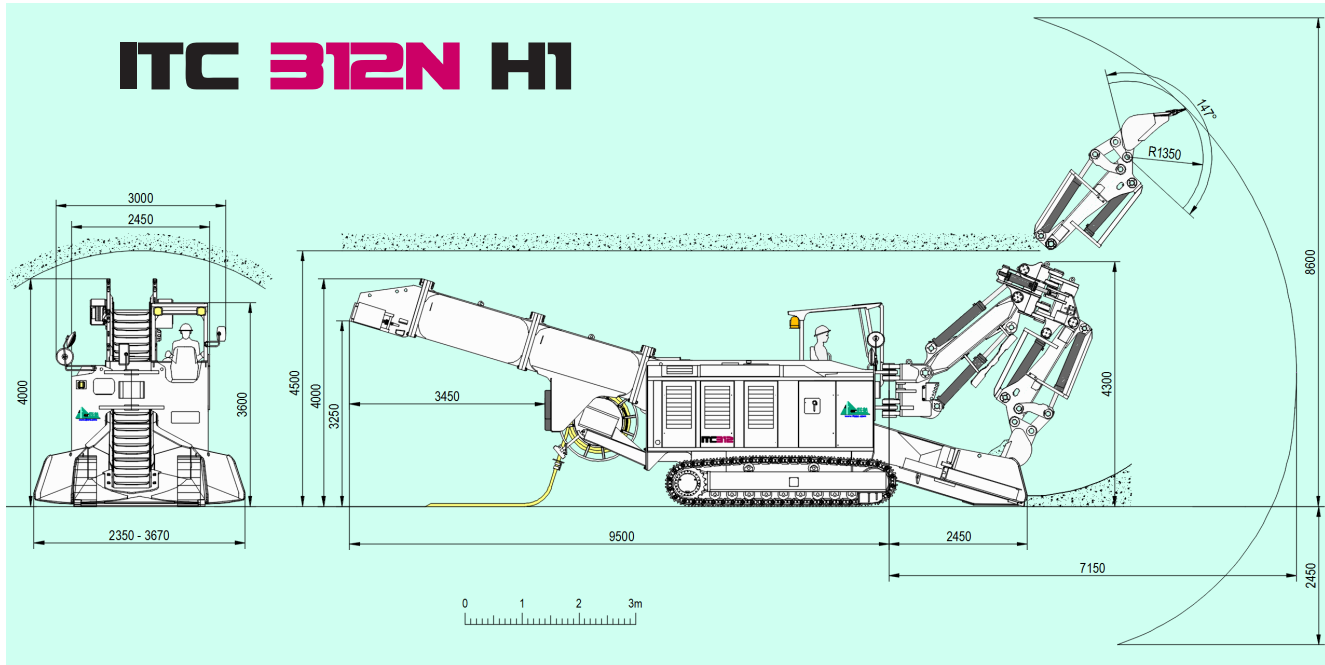
Tf: +41 277 222 191

Fax: +41 277 222 185

info@itcsa.com



# ITC 312N H1



## Technical data ITC 312N – H1

### Drive units

Electro-hydraulic and Diesel hydraulic power packs each with a separate pump unit with variable flow rate  
 Electric drive for emission-free work at the face  
 Air-cooled electric motor, power at 400 Volt , 50 Hz 90 kW  
 Diesel drive for travelling and operation without electric supply.  
 Water-cooled diesel engine. Deutz TCD2013 L06 2V  
 Power rating at 2'000 r.p.m 165 kW  
 Diesel engine complies with emission standard Eur St. 3a

### Electrical system

Total installed power 95 kW  
 Voltage (standard) 400 V - 50 Hz AC  
 Control voltage 230 V - 24 V DC  
 Electrical system acc. to EN 60529 (IP54)  
 Cable reel hydraulically driven with 90 m cable 3x95+3x16 mm<sup>2</sup>

### Operator's cab

Operator's cab gives all-round visibility.  
 Roof removable for transport.  
 CE conformity incl. video monitoring system for the right and rear side with colour LCD in the cab.

### Hydraulic system

Load Sense hydraulic system with combination axial piston pump and gear pump  
 Hydr. pilot control for travelling and main working functions  
 Boom control with 2 joysticks in Euro standards  
 Thermostatic controlled hydr. driven oil/air cooler  
 Max. hydraulic operating pressure 250-350 bar  
 Hydraulic oil tank capacity 400 l  
 Pump delivery Diesel engine 440 l/min  
 Pump delivery Electric motor 500 l/min  
 Hydraulic oil system capacity 450 l

### Operating data (H1 boom equipment)

Minimal cross section approx. 18 m<sup>2</sup>  
 Machine width 2'400 mm  
 Maximal height 3'600 mm  
 Transport height 2'700 mm  
 Length (dep. on conveyor) ~12'000 mm  
 Width of loading apron (adjust.) 2'350-3'700 mm  
 Width of conveyor (internal) 800 mm  
 Height of conveyor (internal) 800 mm  
 Conveyor capacity approx. 300 m<sup>3</sup>/h  
 Conveyor discharge height 2'500-3'500 mm  
 Operating weight approx. 35,2 t

### Boom Equipment H1

H1 Boom equipment for excavation and loading of soft ground or blasted material, includes:

- King post with jib, tilt-swivel console and dipper stick
- Excavation and mucking bucket, width 350 -900 mm
- Hydraulic circuit for a hydraulic rock breaker
- Loading capacity acc. to rock conditions approx. 3 m<sup>3</sup>/min

### Other Equipment

It is possible to attach a range of ancillary equipment, such as pony truck, rubber plated conveyor, transverse cutting unit, soot particle filter, central lubrication device, etc.

Option: Closed cab, Air conditioning, Fire extinguishing device, Water pressurization device with hose reel, Quick hitch system.

Further details of attachments and accessories available upon request.

Subject to modification without prior notice.



ITC SA

[www.itcsa.com](http://www.itcsa.com) [info@itcsa.com](mailto:info@itcsa.com) ☎ +41 277 222 191