

Mucking Tunnel Taglesberg

Intermediate mucking tunnel with 32% decline for the main railway tunnel Wienerwald on the line between Vienna and St. Pölten (Austria).

NEWS
- 30 - 2006

Tunnel Heading Machine Terex | Schaeff ITC 120F2

Mucking in 32 % decline

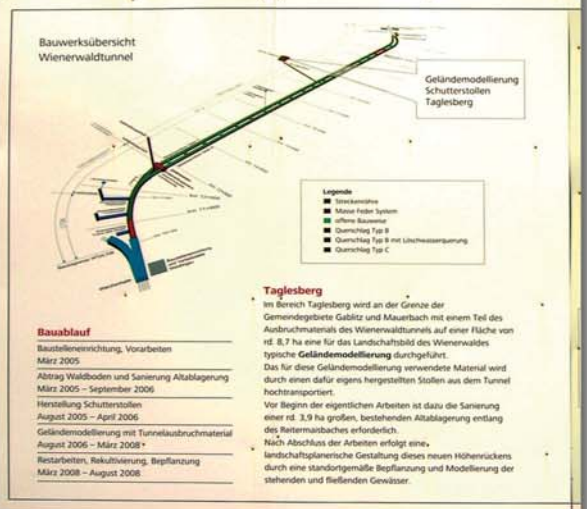


The Tunnel Heading Machine Schaeff model ITC 120 loading onto a dump truck Paus model ITC 8000



The Heading Machine Schaeff model ITC 120 while excavating with the hammer

Ausbau zur viergleisigen Westbahn Neubaustrecke Wien – St. Pölten / Wienerwaldtunnel



General layout of the project



INTER TECHNO COMMERCE SA
122, Rue de la Fusion Fax: +41-277 222 185
CH - 1920 - MARTIGNY Tf: +41-277 222 191
<http://www.itcsa.com> e-mail: info@itcsa.com

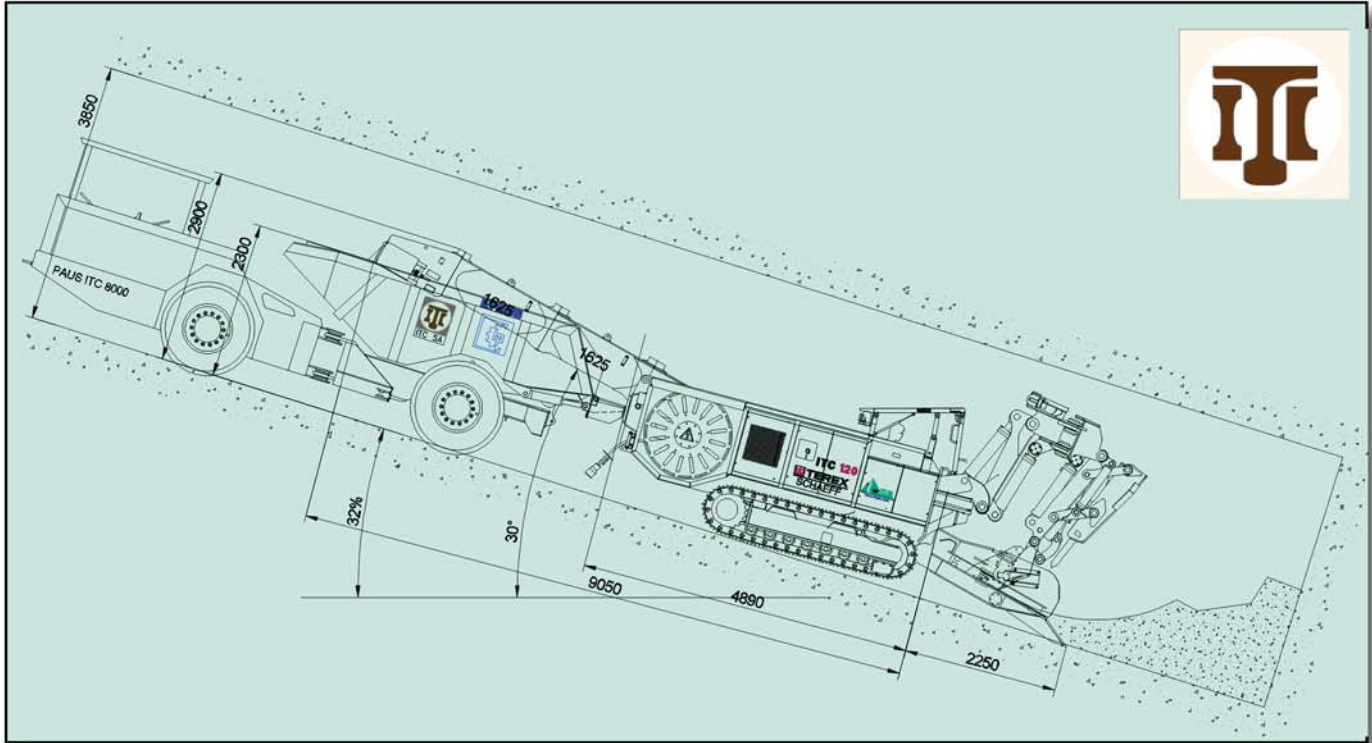




The Dump truck with a concrete mixer drum



Acurate excavation thanks to the tilt and sviwel console



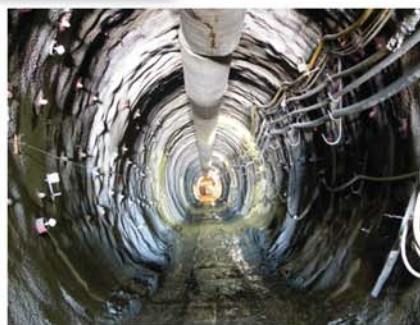
MAIN DATA

Base Machine: Schaeff type	ITC	120
Maximum chassis width:	mm	1900
Apron throat width	mm	620
Electric drive power (400V-50Hz)	kW	55
Diesel Engine	Deutz Typ	BF4M 1012
	Power output	kW
		65
Driving speed:	km/h	0-3,6
Conveyor chain speed:	m/s	0.5
Loading capacity	m ³ /min	1-2
Specific ground pressure:	kp/cm ²	1.0
Traction power:	kN	190
Weight	t	22

Mucking out the blasted material



Rear view in the narrow tunnel



The Tunnel Heading Machine excavating the soft material