

ÖBB - NBS Vienna - St. Pölten

Wienerwald, Extension to 4 lanes of the west line
NATM heading in the east, Los WT2/LT26

NEWS
-20-2005

Tunnel Excavator

Schaeff - Terex **TE 200**

The Viennese forest tunnel runs on a length of about 13.35 km von Hadersdorf-Weidlingau in the east until Chorherren in the west. The Viennese forest tunnel is headed both conventionally and machinally (TBM).



Both side drifts: left the Schaeff Tunnel Excavator TE 200



Top heading: the Schaeff Tunnel Excavator TE 200 during excavation



Top heading: the Schaeff Tunnel Excavator TE 200 while setting steel arches



Top heading: the Schaeff-Tunnel Excavator TE 200 with swivel dipper stick



Left side drift: the Schaeff Tunnel Excavator TE 200 while profiling the vault with a cutting unit

The east heading takes place by means of new Austrian tunnel construction method (NATM), i.e. via excavator and heading by blasting. At 1.8 km of twin lane single tunnel follows about 400 m of a long expansion range for the transition to the two single-railed tunnel tubes.

(excerpt from building information ÖBB infrastructure AG)

further information: www.hl.ag.com

Picture credit: J.V., ITC



INTER TECHNO COMMERCE SA

122, Rue de la Fusion Fax: +41-277 222 185
CH - 1920 - MARTIGNY Tf: +41-277 222 191
<http://www.itcsa.com> e-mail: info@itcsa.com

 **TEREX**
SCHAEFF

Tunnel Excavator

Schaeff - Terex **TE 200**



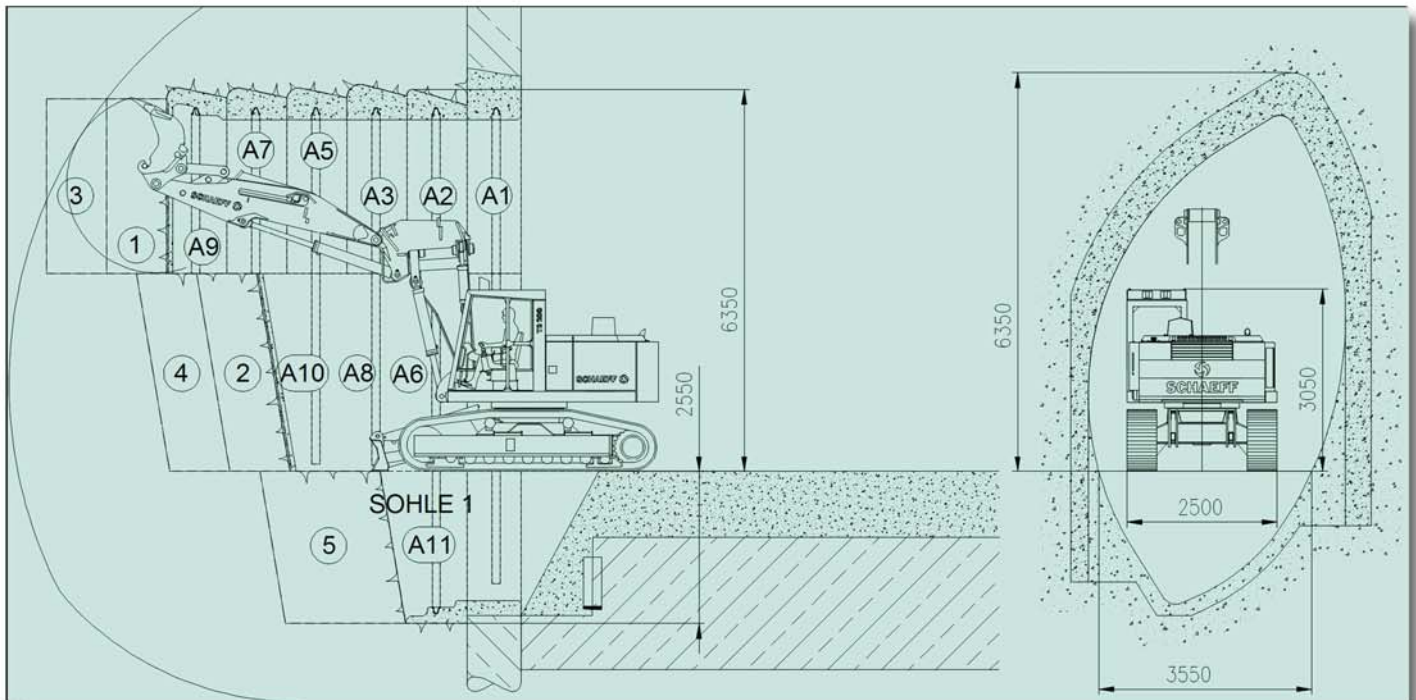
Left side drift: the Schaeff-Tunnel Excavator TE 200 while excavating the fore polling top heading



Right side drift: the Schaeff-Tunnel Excavator TE 200 while excavating the bench

MAIN DATA

Excator Schaeff Typ	TE	200
Max. reaching height	mm	8'900
Min. working height	mm	4'700
Upper carriage width	mm	2500
Diesel engine Perkins	Typ	1006-60T
Power	kW	103
Engine speed	UPM	2300
Fuel tank capacity	l	260
Travel speed	km/h	0-5
Tractive effort	kN	280
Weight	t	25



Side drift: the Schaeff-Tunnel Excavator TE 200 in a very narrow cross-section



ARGE Wienerwaldtunnel



BILFINGER BERGER

BILFINGER BERGER
BAUGES.M.B.H.

BILFINGER BERGER

BILFINGER BERGER AG
NL TUNNELBAU

